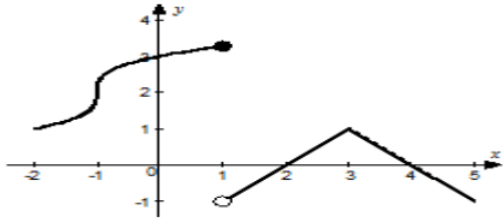


# Unit 3 Keeper Pictures

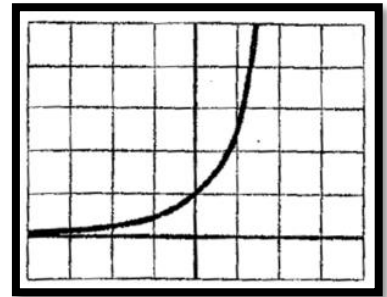
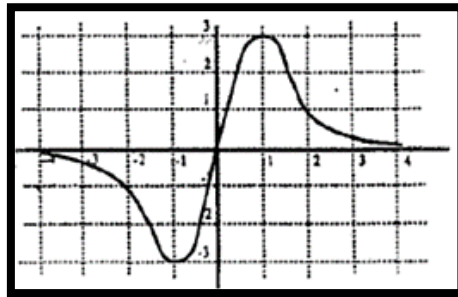
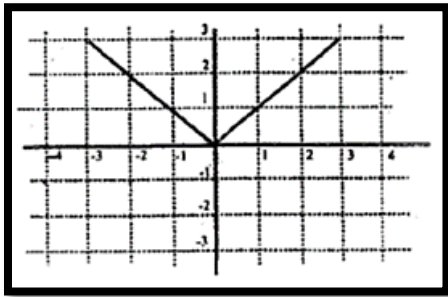
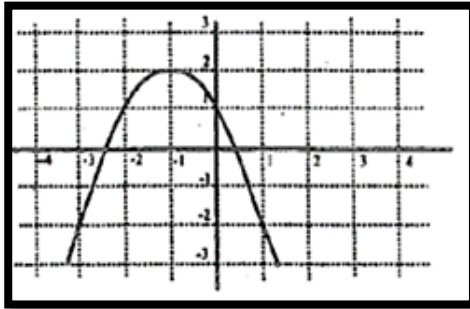
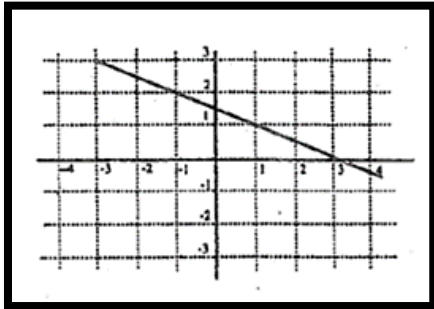
3.2



3.4

RELATIONSHIP BETWEEN $f, f', f''$		
$f$	$f'$	$f''$
-Cusp -Corner -Discontinuity -Removable -Infinite -jump -Vertical Tangent	DNE	DNE
Local max, local min (local extrema), horizontal tangent	0 On the x-axis	
$f$ increasing	Positive (Above the x-axis)	
$f$ decreasing	Negative (Below the x-axis)	
$f$ concave up	Increasing	Positive (Above the x-axis)
$f$ concave down	Decreasing	Negative (Below the x-axis)
Points of Inflections	Local Extrema	Change Signs

3.4



3.5

