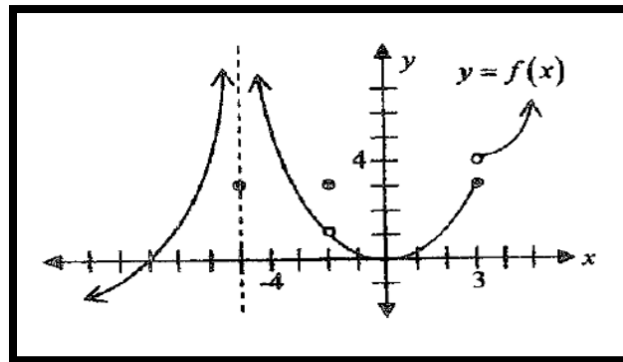
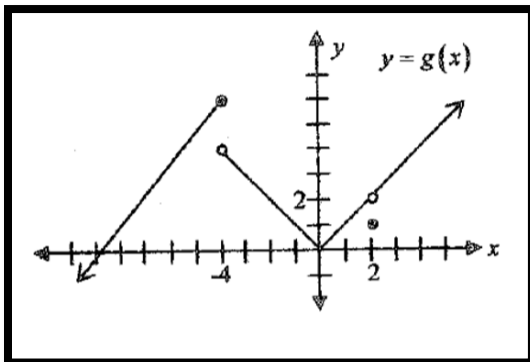
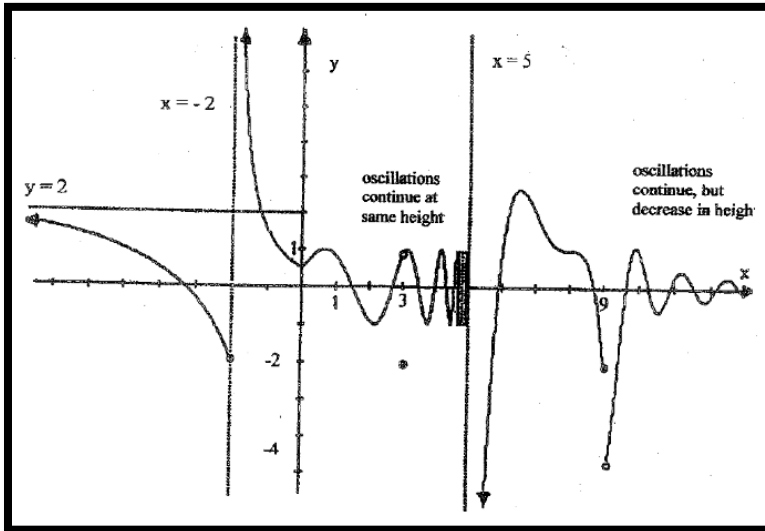


2.1

x	8.9	8.99	8.999	8.9999	9	9.001	9.01	9.1
f(x)	5.98329	5.99883	5.99983	5.999983	6	6.00016	6.00166	6.016
g(x)	15.21	15.9201	15.99201	15.999200	und	16.00080	16.0801	16.81
h(x)	5.98329	5.99883	5.99983	5.999983	6	16.00080	16.0801	16.81



2.3

