

Keeper 3.4 - Curve Sketching f to f'

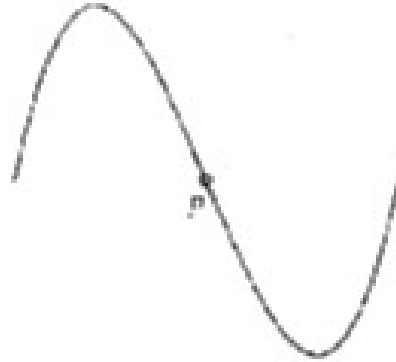
Virtual Problems

Examples: What can we say about g , g' , g'' for each segment of the graph $y = g(x)$

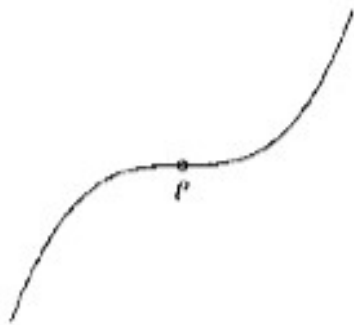
1.



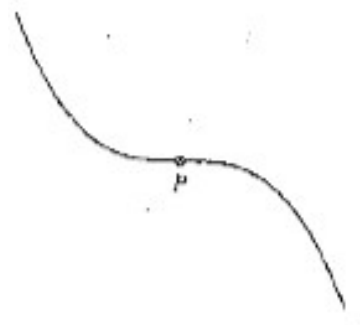
2.



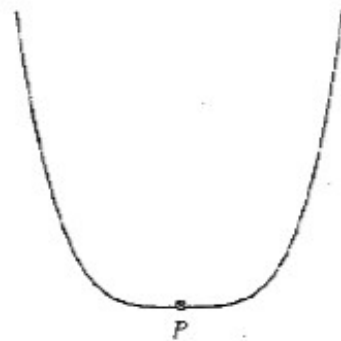
3.



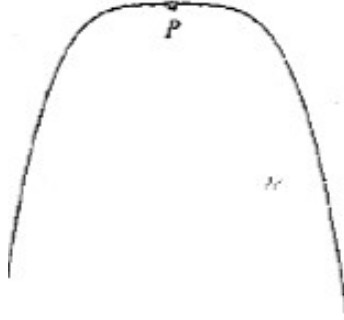
4.



5.

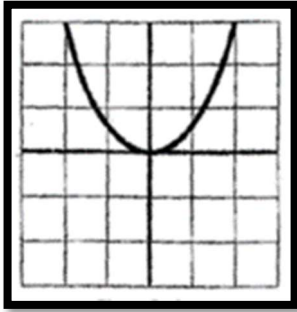


6.

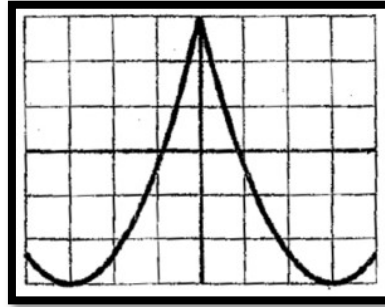


Examples: Given the graph of f draw the graph of f'

7.



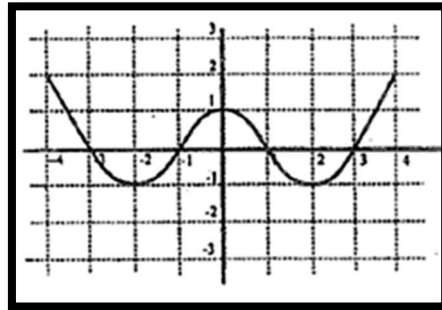
8.



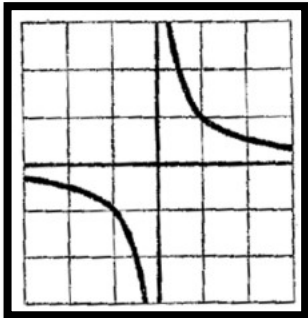
9.



10.



11.



12.



13. Identify the original function, the first derivative and the second derivative.

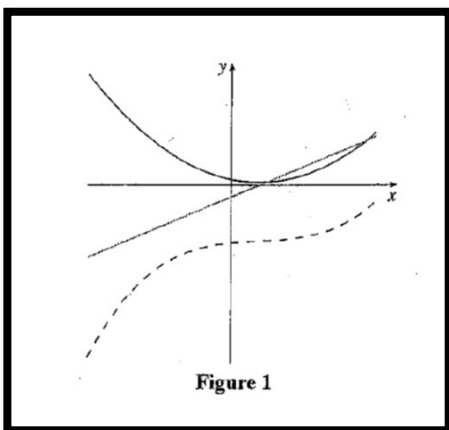


Figure 1

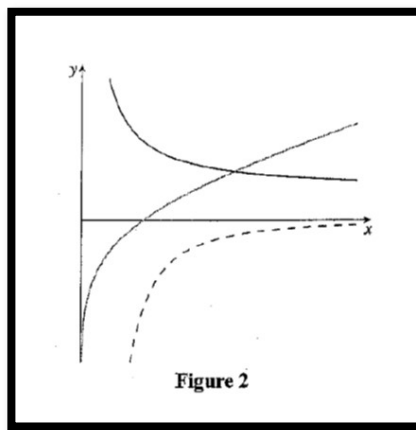


Figure 2

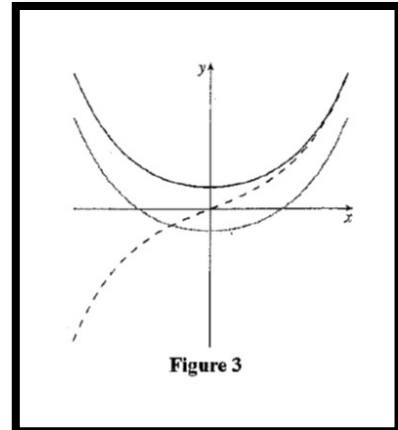
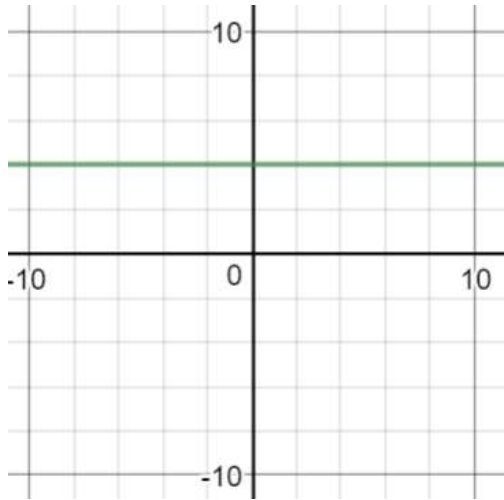


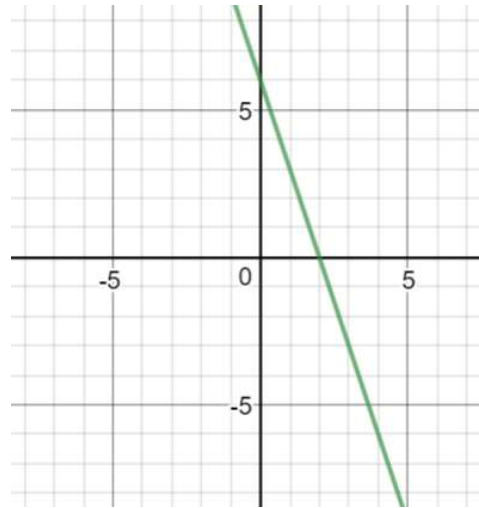
Figure 3

Examples: Sketch the graph of f' and f''

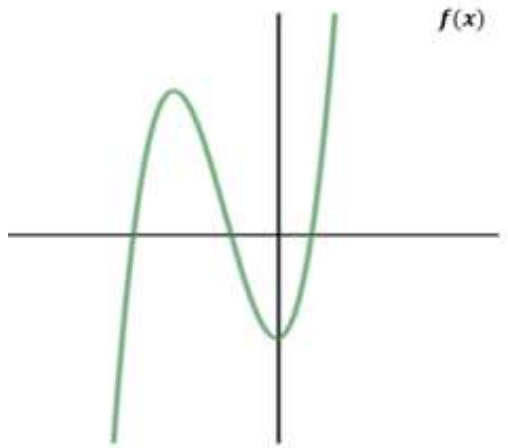
14.



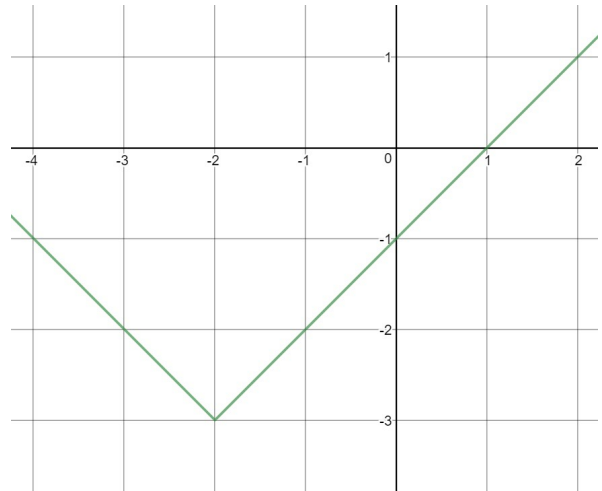
15.



16.



17.



18.

