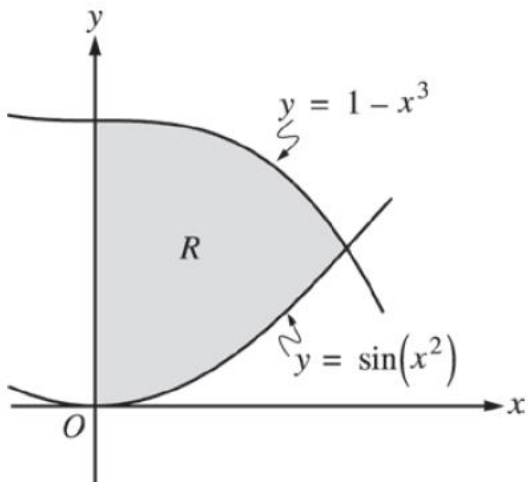
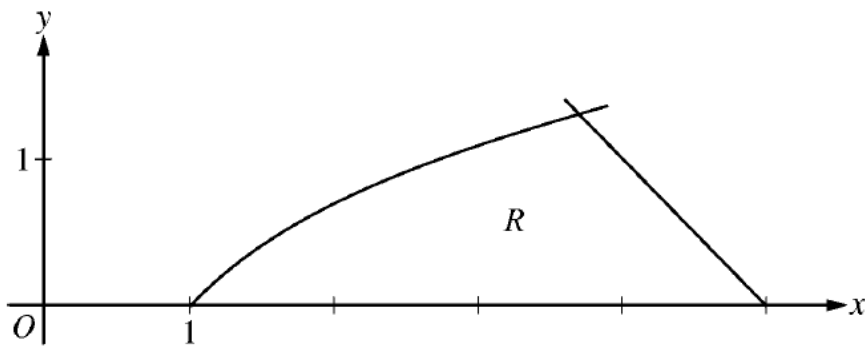


Area between Curves – Calculator Practice



1. Let R be the shaded region in the first quadrant enclosed by the y -axis and the graphs of $y = 1 - x^3$ and $y = \sin(x^2)$ as shown in the figure above. Find the area of R .



2. Let R be the region in the first quadrant bounded by the x -axis and the graphs of $y = \ln x$ and $y = 5 - x$, as shown in the figure above. Find the area of R .